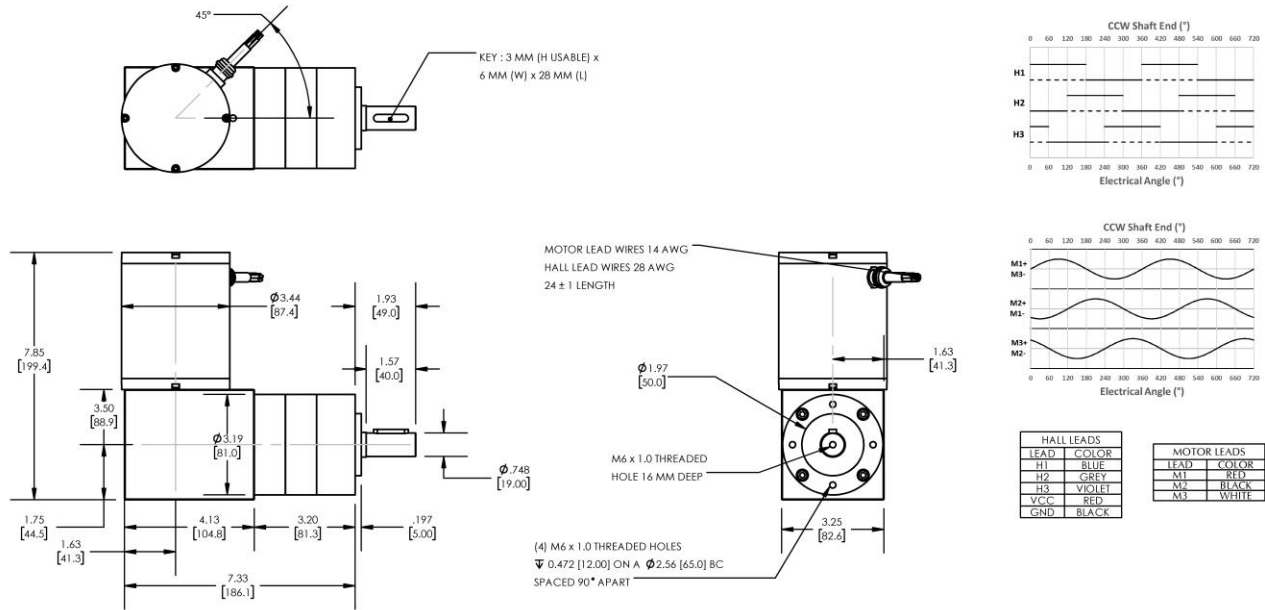


**Model Number:**

## MMP BL87-435E-60V GRA81-046



DIMENSIONS ARE INCHES [MM] UNLESS OTHERWISE STATED

PLANETARY GEARMOTOR OUTPUT PARAMETERS:	VALUE	UNITS	TOLERANCE
Gearhead Ratio (exact)	45.56 : 1		
Gearhead Shaft Output Speed (at full-load)	57	RPM	MAX
Gearmotor Rated Continuous Torque	538	In-Lbs	MAX
Gearmotor Rated Peak Torque	1062++	In-Lbs	----
Gearhead Standard Backlash	33	Arc Minutes	MAX
Gearhead Efficiency	75%	----	----
Output Shaft Radial Load Capacity	135	Lbs	MAX
Output Shaft Axial Load Capacity	27	Lbs	MAX
Gearmotor Total Weight	16	Lbs	MAX

++ All Peak Torque values are dependent upon duty. Contact our sales office for details.

DC MOTOR PERFORMANCE PARAMETERS:	VALUE	UNITS	TOLERANCE
Rated DC Voltage	60	DC VOLTS	----
Rated Continuous Current	12.0	AMPERES	----
No-Load Speed	3659	RPM	MAX
Rated Speed	2577	RPM	+/- 15%
Rated Continuous Power Out	479	WATTS	+/- 15%
Rated Continuous Torque	252	OZ-IN	----
Peak Torque (motor only)	602	OZ-IN	----
No-Load Current	0.69	AMPERES	MAX
Back EMF Constant (Ke)	16.4	V/KRPM	+/- 10%
Torque Constant (Kt)	22.2	OZ-IN/AMP	+/- 10%
DC Armature Resistance	1.47	OHMS	+/- 15%
Armature Inductance	1.14	mH	+/- 15%
Armature temperature	155	DEG. C	MAX

**NOTES:**

- ENCODER & BRAKE OPTIONS AVAILABLE – [FOLLOW THIS LINK FOR DETAILS](#)
- NEMA MOUNTING FLANGE OPTION AVAILABLE – [FOLLOW THIS LINK FOR DETAILS](#)

# MIDWEST MOTION PRODUCTS, INC

DESIGN, MANUFACTURING & DISTRIBUTION - MOTION CONTROL EQUIPMENT

[www.midwestmotion.com](http://www.midwestmotion.com)

email: [sales@midwestmotion.com](mailto:sales@midwestmotion.com)